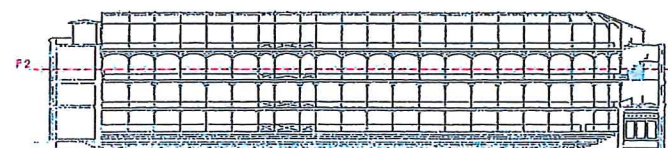
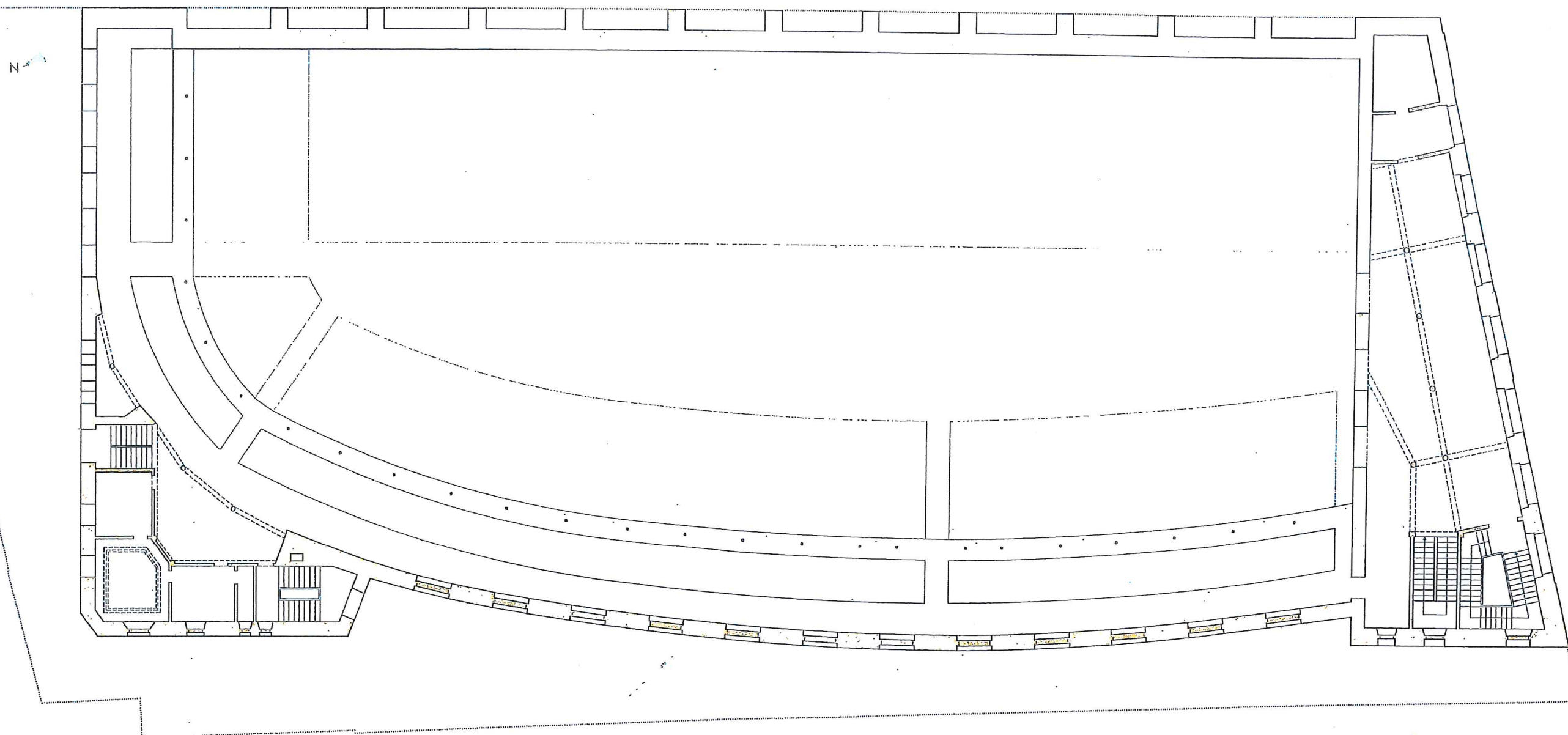


# PLANTA SEGUNDA

## SUPERFICIES CONSTRUIDAS ESTADO ORIGINAL

PLANTA	m <sup>2</sup>
cancha	745,57
acceso	1.027,46
primera	1.027,46
segunda	1.027,46
tercera	368,06
<b>TOTAL</b>	<b>4.196,01</b>
patio	1.715,00



13 | 12 | 11 | 10 | 9 | 8 | 7 | 6 | 5 | 4 | 3 | 2